

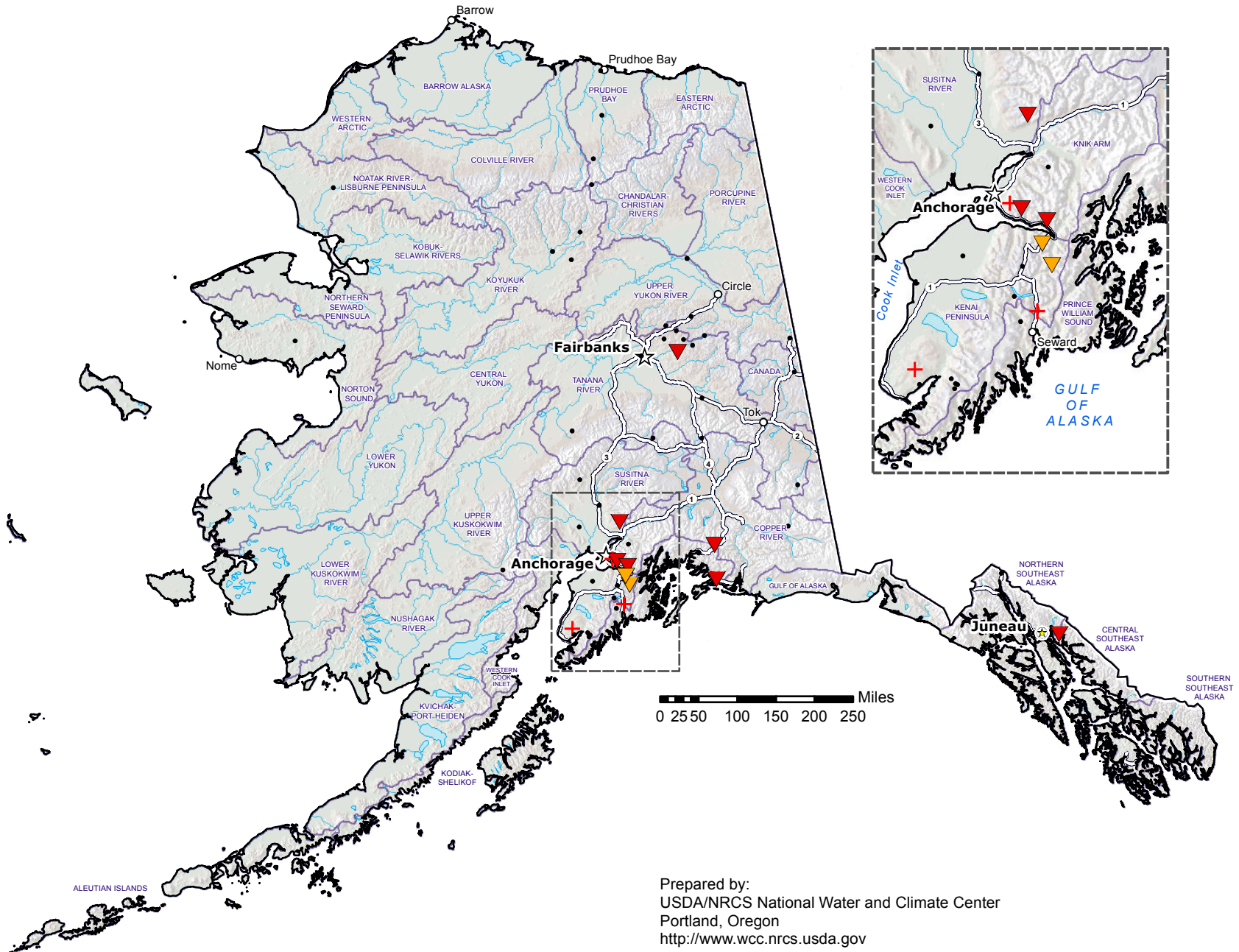
Alaska SNOTEL Snow Water Equivalent (SWE) % of Normal

Jul 31, 2017

**Current SWE
% of 1981-2010
Median**

- ▲ > 160%
- ▲ 140-160%
- ▲ 120-139%
- ▲ 100-119%
- ▲ 80-99%
- ▲ 60-79%
- ▲ 40-59%
- ▼ 1-39%
- ✚ 0%
- Unavailable*

**Provisional Data
Subject to Revision**



Prepared by:
USDA/NRCS National Water and Climate Center
Portland, Oregon
<http://www.wcc.nrcs.usda.gov>

* Data unavailable at time of posting or unavailable long-term normal.