



# Texas Crop Progress and Condition

Texas Field Office, Post Office Box 70, Austin, Texas 78767 · 800-626-3142 · www.nass.usda.gov/tx

**WEEKLY SUMMARY FOR FEB 24 – MARCH 2**

**ISSUE TX-CW0814**

**RELEASED MARCH 3, 2014**

## Summary

A mixed bag of weather was reported across Texas this week. Most areas saw a return to warmer temperatures with highs in the 80's midweek. However, the High Plains recorded freezing temperatures with snow and sleet at week's end with precipitation totals ranging from 0.25 inches to 2 inches. East Texas received up to 2 inches of precipitation with the remainder of the state receiving a trace up to an inch of moisture.

Crop Progress					
Crop	Stage	Percent of Acreage			
		Current	Prev Week	2013	5 Yr Avg
Corn	Planted	8	3	14	9
Sorghum	Planted	3	--	8	5

Crop Condition					
Crop	Percent of Acreage				
	Excellent	Good	Fair	Poor	Very Poor
Wheat	1	14	39	30	16
Oats	9	27	37	18	9
Range and pasture	2	13	33	33	19

\* The formula for the condition index is  $I = (5V + 25P + 60F + 90G + 110E)/100$  where I = crop condition index and V, P, F, G, E = percentage of crop rated very poor, poor, fair, good, excellent.

**Small Grains:** Winter wheat conditions improved in the Northern High Plains and the Edwards Plateau where precipitation was received. Irrigation aided the progress of oats in South Texas.

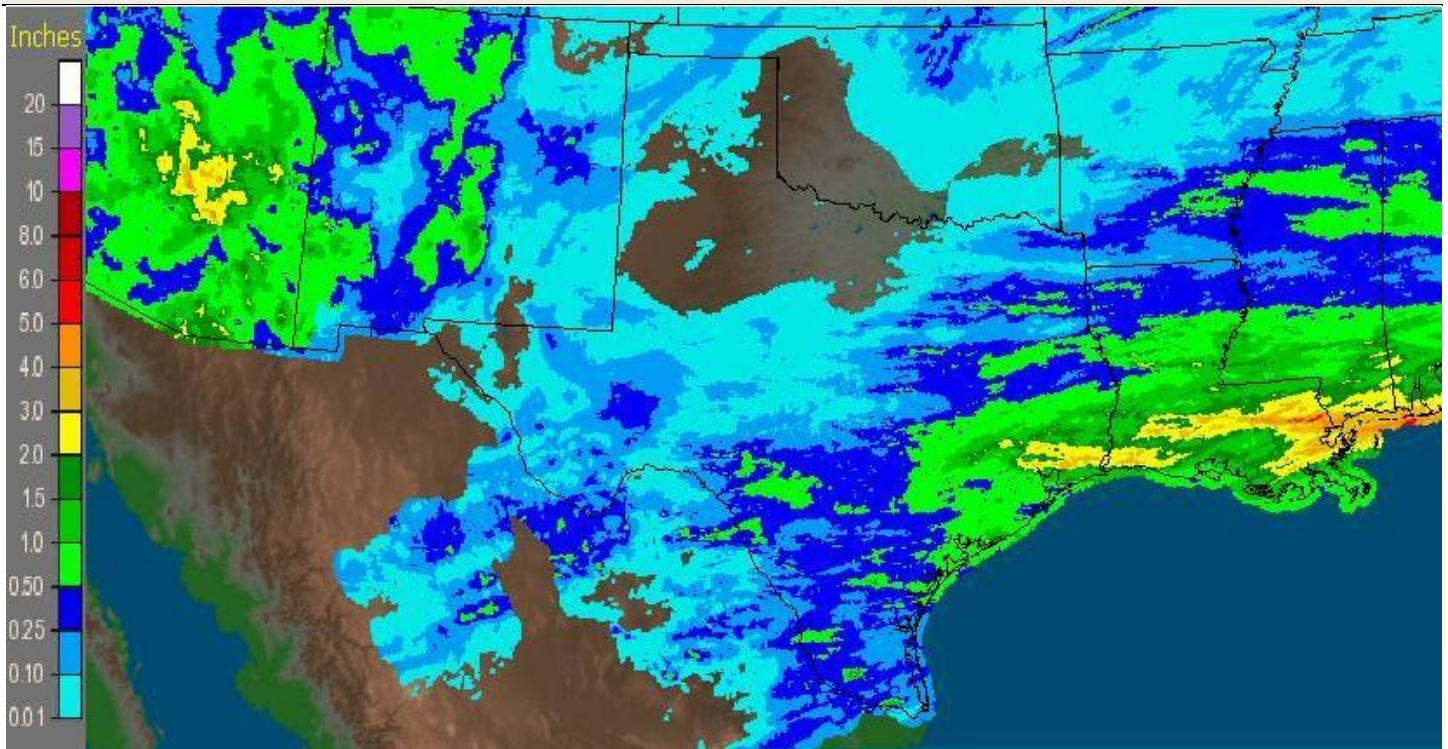
**Row Crops:** The passage of a cold front delayed corn planting in the Blacklands. Corn planting continued in South Central Texas, despite dry conditions. Sorghum planting was in full swing in the Lower Valley. Sorghum and cotton growers in the Coastal Bend delayed planting in hopes of receiving needed moisture. Herbicide application continued in the Northern Low Plains in preparation for cotton planting.

**Fruit, Vegetable and Specialty Crop:** Fruit trees continued to be pruned in North East Texas. Pecan hedging had been completed in the Trans-Pecos. Producers in the Lower Valley continued to transplant vegetables and began preparations for the upcoming onion harvest.

**Livestock, Range and Pasture:** Calving season continued in full swing. Supplemental feeding of livestock continued. Producers continued to see a favorable cattle market, with prices rising for all classes. Feral hogs continued to cause problems throughout East Texas. Fired Danger remained high for most of the state's rangeland.

Top Soil Moisture Condition by District									
District	Percent of Acreage				District	Percent of Acreage			
	Very Short	Short	Adequate	Surplus		Very Short	Short	Adequate	Surplus
1-N	54	40	6	0	6	56	29	13	2
1-S	43	48	8	1	7	29	47	24	0
2-N	33	48	18	1	8-N	17	57	26	0
2-S	50	42	8	0	8-S	22	61	15	2
3	31	58	11	0	9	8	27	61	4
4	18	47	33	2	10-N	26	59	15	0
5-N	3	22	66	9	10-S	0	27	65	8
5-S	1	23	56	20	State	32	46	21	1

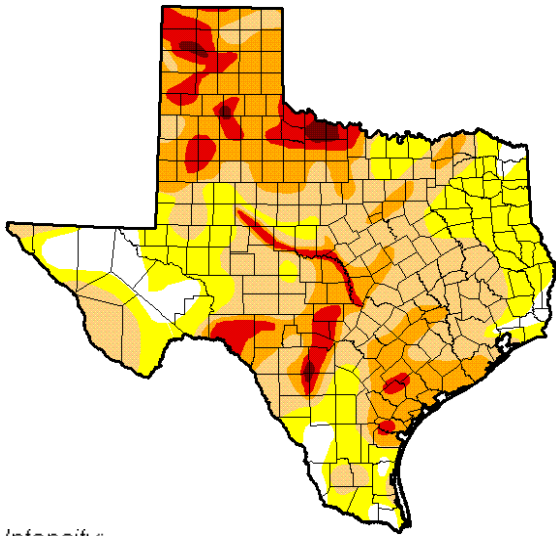
Seven Day Observed Regional Precipitation, March 2, 2014



Source: National Weather Service, [www.nws.noaa.gov](http://www.nws.noaa.gov)

# Drought Monitor

Valid 2/25/2014, 7:00 am ET



## Intensity:



Source: National Drought Mitigation Center, a partnership with USDA, U.S. Department of Commerce/NOAA, <http://droughtmonitor.unl.edu/>

# Texas Agricultural Districts

